



**NORTHSIDE HOSPITAL
CANCER INSTITUTE**

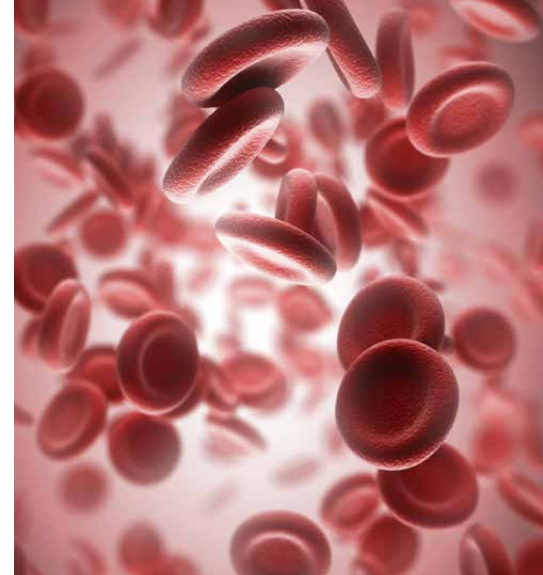
**BLOOD & MARROW
TRANSPLANT PROGRAM**

**The Blood & Marrow
Transplant Group**
OF GEORGIA



**NORTHSIDE HOSPITAL
CANCER INSTITUTE**

LEUKEMIA PROGRAM



Blood and Marrow Transplant Program

.....

Clinical Trial Opening

Open to Enrollment: Phase 2, Single-arm, Multicenter Trial to Determine the Efficacy and Safety of JCAR015 in Adult Subjects with Relapsed or Refractory B-Cell Acute Lymphoblastic Leukemia

Sponsored by Juno Therapeutics

NSH-Leukemia Program in collaboration with Juno Therapeutics is offering an investigational A Phase 2, Single-arm, Multicenter Trial to Determine the Efficacy and Safety of JCAR015 in Adult Subjects with Relapsed or Refractory B-Cell Acute Lymphoblastic Leukemia.

The outcome for adult patients with relapsed or refractory B-cell acute lymphoblastic leukemia (ALL) remains poor. The development of CD19-specific chimeric antigen receptor (CAR) T cells to target CD19+ cancer cells, such as JCAR015, provides a new approach to the treatment of CD19+ B-cell malignancies. Using this approach, autologous T cells can be genetically modified to target leukemia cells through the expression of retroviral vector-transduced genes encoding CD19-specific CARs. The clinical experience to date with CD19-directed CAR T cells has shown this therapy to have potent anti-leukemia activity in both adult and pediatric patients.

To be considered for this study, patients must meet the following criteria:

- Age \geq 18 years at the time of consent
- Diagnosis of B-cell ALL by flow cytometry
- Relapsed or refractory disease
- Bone marrow with morphological evidence of disease (\geq 5% blasts by morphology)
- ECOG 0-2
- Adequate organ function

Exclusion criteria:

- Isolated extramedullary disease relapse
- Concomitant genetic syndrome such as Fanconi anemia, Kostmann syndrome, Shwachman syndrome, or any other known bone marrow failure syndrome
- Burkitt's lymphoma/leukemia or chronic myelogenous leukemia (CML) lymphoid blast crisis (p210 BCR-ABL+)
- Treatment with any prior gene therapy product

If you have any questions, would like to discuss study logistics, or the eligibility of any patients, please contact Stacey Brown, NSH BMT/Leukemia Clinical Research Manager, at 404-851-8238 or stacey.brown@northside.com



**NORTHSIDE HOSPITAL
CANCER INSTITUTE**

5670 Peachtree Dunwoody Road,
Suite 1000
Atlanta, GA 30342

Presorted
First-Class Mail
U.S. Postage PAID
Atlanta, GA
Permit #1713